

JOINING THE ASSOCIATION

Membership of the Association runs from January to December.

Benefits include:

- 🐝 Bee Diseases Insurance, Public & Products Liability Insurance for members (£5 million)
- 🐝 Free monthly newsletters
- 🐝 Free adverts on Chelmsford Beekeepers website
- 🐝 Monthly meetings and events
- 🐝 Support from local experts (advisors) when you need advice or help
- 🐝 Bee book library
- 🐝 Discount on your subscriptions to 'BeeCraft' journal
- 🐝 Jars available for purchase in high and low volumes at discount prices
- 🐝 Access to Divisional apiary
- 🐝 Equipment available to borrow

Annual membership costs are £28.50 for a single member and £46 for the family

Officers

PRESIDENT: Roy Hardwicke Tel 01245 225950

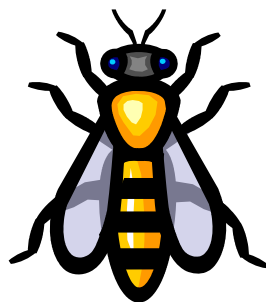
CHAIRMAN: Jean Smye Tel 07731856361

TREASURER: Ian Grant Tel 01277 652855

New members contact point:

Jean Smye Tel 07731856361

Email : chelmsfordbees@btopenworld.com



ESSEX BEEKEEPERS' ASSOCIATION

Chelmsford Division

Reg Charity 1031419

Website: www.chelmsfordbees.co.uk



**INTERESTED
IN
KEEPING BEES?**

Affiliated to the
**BRITISH BEEKEEPERS
ASSOCIATION**

Website: www.britishbee.org.uk

WHO ARE WE ?

The Chelmsford Division is one of nine divisions of the Essex Beekeepers' Association (EBKA).

We are a group of beekeepers living in and around Chelmsford, with a passion for the craft of beekeeping. The Chelmsford Division and the EBKA were founded in 1880 and became a charity in 1993.

Our membership ranges from absolute beginners to those with many years' experience, and both can provide you with the support and knowledge you will need to start beekeeping.

Chelmsford beekeepers are always keen to have new members and you are assured of a warm welcome.

OUR AIMS

Our aims are to promote the art of beekeeping, by:

- running an interesting and informative programme of meetings and events for members
- giving support to members, including practical help and advice
- educating the public at Shows about bees and working with schools, within the curriculum, to extend knowledge of bees and beekeeping

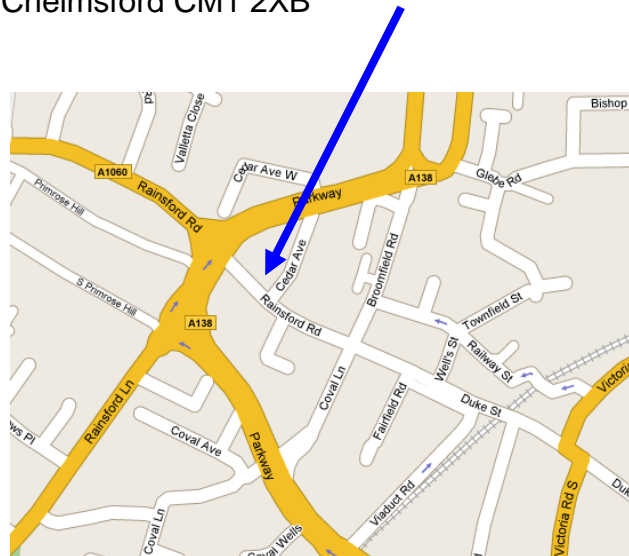
GETTING STARTED

The Chelmsford Division usually runs a beginners' beekeeping course in the autumn. The course consists of 6 lessons/lectures on the theory of bee keeping and these will be followed up with practical sessions in the spring.

Beginners will then be assigned to a local bee keeper to guide them through their first season.

Meetings

Our meetings are usually held on the third Monday of each month at 'The Link', Trinity Hall, Methodist Church, Rainsford Road, Chelmsford CM1 2XB



However, meeting dates vary so please check our website for up-dated information and the latest programme of events: www.chelmsfordbees.co.uk

EQUIPMENT NEEDED

The basic equipment you will need to start your fascinating journey in the world of beekeeping consists of:

Bee Suit (£40-£100), Gloves (£10)

Hive Tool (£5), Smoker (£15-£25)

This equipment will allow you to examine and manipulate bees and is all you should need for the first year.

Our Division usually has member(s) offering to sell second-hand equipment at reasonable prices. There are also local agents who sell new equipment. Protective clothing, such as veils and gloves, is also available for beginners to borrow on their initial apiary visits.

Advice on the type of hive and clothing to purchase is part of the Beginners' course.

The Way forward?

If this has sparked off an interested in the craft of beekeeping, please take a look around our website or contact us via the details on the back of this leaflet.